

# CH-01

SITONIT WIT TASK CHAIR;  
HIGHER CYLINDER;  
TEACHER'S CHAIR

# WSU TECH NCAT EXPANSION #13038R22020

4004 N. WEBB ROAD; BLDG. 400, WICHITA, KS, UNITED STATES, 67226

AREAS: Air Mobility Lab (#222), Attic Stock (#Attic Stock), Class (#206), Classroom 1 (#148), Classroom 2 (#223), Classroom 3 (#226), Classroom 4 (#212), CONTROL/PLC LAB (#145), ELECTRICAL LAB (#149), Engineering design & 3D Modeling Lab (#210), Flex (#106), General AMT Academy (1) (#205), IOT (#143), MECHANICAL LAB (#147), Robotics Computer Lab (#146), ROBOTICS TRAINING CENTER (#144), SMART LAB (#105), UAS/Drones Lab (1) (#214)

QUANTITY: 19 ea  
MODEL NUMBER: 2223 F A128 B1 FG2 C17 S13 B8 MC20 FC1 Z2 AC

LOCATION: Teacher's Chair

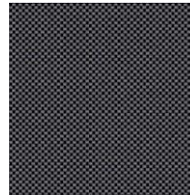
FINISH: Mesh Back: **Onyx**; Seat: SitOnIt /Dice/Onyx; **Adjustable Lumbar** Support: Silver; Base: brushed Alum. **Frame: Black**

SEAT HEIGHT: Higher Cylinder - 19" - 25.5"

DIMENSIONS: 26"W x Higher Cylinder - 40.75"H x 25"D

chairbuilder.sitonit.net

Code correction for hard floor & carpet casters



### NOTES

HIGH MESH BACK WITH ADJUSTABLE LUMBAR, HEIGHT ADJUSTABLE ARMS, STANDARD SYNCHRO, HIGH CYLINDER, **ALUMINUM BASE, HARD FLOOR CASTERS.**

### VENDOR

MCR

### VENDOR REP CONTACT

MAGGIE GOSS -  
MAGGIE@MERCURYCONTRACT.COM

### MANUFACTURER

SITONIT

### MANUFACTURER CONTACT

### REQUIRED ITEMS FOR DESIGNER APPROVAL PRIOR TO FABRICATION

- CFA
- FINISH SAMPLE
- FLAME CERT
- PROTOTYP E
- SEAMING DIAGRAM
- SHOP DWGS
- STRIKE OFF

### INSTRUCTIONS:

- **BASIS OF DESIGN**

# CH-02

SITONIT WIT LIGHT TASK STUDENT CHAIR

# WSU TECH NCAT EXPANSION #13038R22020

4004 N. WEBB ROAD; BLDG. 400, WICHITA, KS, UNITED STATES, 67226

AREAS: Air Mobility Lab (#222), Attic Stock (#Attic Stock), Class (#206), Classroom 1 (#148), Classroom 2 (#223), Classroom 3 (#226), Classroom 4 (#212), Engineering design & 3D Modeling Lab (#210), General AMT Academy (1) (#205), IOT (#143), Robotics Computer Lab (#146), SMART LAB (#105), UAS/Drones Lab (1) (#214)

QUANTITY: 295 ea

MODEL NUMBER: 2222 F A128 B1 VG7 C17 B0 MC20 FC1 Z1 UC

FINISH: MESH BACK: ONYX; SEAT: ARCHITEX/ MANTLE/24/7 PERFORMANCE VINYL/MAGNESIUM; BASE: BLACK; FRAME: BLACK

SEAT HEIGHT: 17.75"

WEIGHT: 36lbs

DIMENSIONS: 26"W x 36.75H x 17.5"-21.25"D

www.sitonit.net



### NOTES

SITONIT ERGONOMIC MID-BACK LIGHT TASK CHAIR WITH MESH BACK, ADJ. LUMBAR SUPPORT, PULL HANDLE, SYNCHRO TILT MECHANISM, HEIGHT ADJ. ARMS, BLACK BASE, AND WATERFALL SEAT, HARD FLOOR AND CARPET CASTERS.

### VENDOR

MCR

### VENDOR REP CONTACT

MAGGIE GOSS - MAGGIE@MERCURY CONTRACT.COM; FABRIC: AMY NEUSEL - AMYNEUSEL@ARCHITEX-LJH.COM

### MANUFACTURER

SITONIT

### MANUFACTURER CONTACT

### REQUIRED ITEMS FOR DESIGNER APPROVAL PRIOR TO FABRICATION

- CFA  FINISH SAMPLE  FLAME CERT  PROTOTYP E  SEAMING DIAGRAM  SHOP DWGS  STRIKE OFF

### INSTRUCTIONS:

- BASIS OF DESIGN

**\*NO FINISH SAMPLE REQUIRED FOR BID SUBMISSION**

THE FURNITURE SPECIFIED IN THIS BID HAS BEEN SELECTED TO ESTABLISH THE OVERALL DESIGN INTENT, FUNCTIONALITY, AND QUALITY STANDARDS FOR THE PROJECT. ALL PROPOSED PRODUCTS MUST MEET THE PERFORMANCE, DURABILITY, ERGONOMIC, AND AESTHETIC REQUIREMENTS INDICATED IN THE CONTRACT DOCUMENTS. BIDDERS ARE ENCOURAGED TO PROVIDE EQUIVALENT FURNITURE PRODUCTS FROM MANUFACTURERS OR SUPPLIERS THAT MEET OR EXCEED THE SPECIFIED CRITERIA. SUBSTITUTIONS WILL BE REVIEWED FOR COMPLIANCE WITH MATERIALS, DIMENSIONS, FINISHES, AND FUNCTIONALITY. THE INTENT IS TO ENSURE

# CH-04

SITONIT AXYS COUNTER  
STOOL

# WSU TECH NCAT EXPANSION #13038R22020

4004 N. WEBB ROAD; BLDG. 400, WICHITA, KS, UNITED STATES, 67226

AREAS: Flex Prefunction (#228), Lobby (#102)

QUANTITY: 6 ea

MODEL NUMBER: 2101 S9 US UB VG7 AR0  
FC15 GL9 AC

FINISH: Chrome Base; Upholstery: Arcihtex /Write-Off Vinyl / Telfair / Pitch

SEAT HEIGHT: 24.5"

WEIGHT: 20lbs

DIMENSIONS: 17.75W x 35"H x 20"D

chairbuilder.sitonit.net



### NOTES

AXYS COUNTER STOOL W/ PADDED SEAT. X-SLED BASE. MODERN LOW BACK ON COUNTER STOOLS. DOUBLE-NEEDLE AND FRENCH SEAM BORDER STITCHING. X-PATTERN WIRE ROD BASE. **INCLUDE OPTIONAL GLIDES.**

VENDOR

MCR

VENDOR CONTACT

MAGGIE GOSS

MANUFACTURER

SITONIT

MANUFACTURER CONTACT

### REQUIRED ITEMS FOR DESIGNER APPROVAL PRIOR TO FABRICATION

- CFA     
  FINISH SAMPLE     
  FLAME CERT     
  PROTOTYP E     
  SEAMING DIAGRAM     
  SHOP DWGS     
  STRIKE OFF

### INSTRUCTIONS:

#### • BASIS OF DESIGN

THE FURNITURE SPECIFIED IN THIS BID HAS BEEN SELECTED TO ESTABLISH THE OVERALL DESIGN INTENT, FUNCTIONALITY, AND QUALITY STANDARDS FOR THE PROJECT. ALL PROPOSED PRODUCTS MUST MEET THE PERFORMANCE, DURABILITY, ERGONOMIC, AND AESTHETIC REQUIREMENTS INDICATED IN THE CONTRACT DOCUMENTS. BIDDERS ARE ENCOURAGED TO PROVIDE EQUIVALENT FURNITURE PRODUCTS FROM MANUFACTURERS OR SUPPLIERS THAT MEET OR EXCEED THE SPECIFIED CRITERIA. SUBSTITUTIONS WILL BE REVIEWED FOR COMPLIANCE WITH MATERIALS, DIMENSIONS, FINISHES, AND FUNCTIONALITY. THE INTENT IS TO ENSURE QUALITY, CONSISTENCY, AND LONG-TERM VALUE WHILE ALLOWING COMPETITIVE BIDDING AMONG QUALIFIED VENDORS. ALL PROPOSALS MUST INCLUDE DETAILED PRODUCT SPECIFICATIONS, WARRANTY INFORMATION, AND DOCUMENTATION DEMONSTRATING EQUIVALENCE TO THE DESIGN INTENT.

# CH-04b

## SITONIT AXYS BAR STOOL

# WSU TECH NCAT EXPANSION #13038R22020

4004 N. WEBB ROAD; BLDG. 400, WICHITA, KS, UNITED STATES, 67226

**AREAS:** Student Lounge Market (#202)  
**QUANTITY:** 8 ea  
**MODEL NUMBER:** 2101 S2 US UB VG7 AR0  
FC15 GL9 AC  
**FINISH:** Chrome Base; Upholstery:  
Architex /Write-Off Vinyl /  
Telfair / Pitch  
**SEAT HEIGHT:** 30.25"  
**WEIGHT:** 20lbs  
**DIMENSIONS:** 17.75W x 41"H x 22.25"D

chairbuilder.sitonit.net



### NOTES

AXYS BAR STOOL IS A SCULPTED PADDED SEAT. X-SLED BASE  
MODERN LOW BACK ON BAR STOOLS. DOUBLE-NEEDLE AND  
FRENCH SEAM BORDER STITCHING. X-PATTERN WIRE ROD BASE.  
INCLUDE OPTIONAL GLIDES.

### VENDOR

MCR

### VENDOR REP CONTACT

MAGGIE GOSS -  
MAGGIE@MERCURY  
CONTRACT.COM; FABRIC: AMY  
NEUSEL -  
AMYNEUSEL@ARCHITEX-  
LJH.COM

### MANUFACTURER

SITONIT

### MANUFACTURER CONTACT

**CH-05**

SITONIT AXYS SIDE CHAIR

**WSU TECH NCAT EXPANSION  
#13038R22020**

4004 N. WEBB ROAD; BLDG. 400, WICHITA, KS, UNITED STATES, 67226

**AREAS:** Flex Prefunction (#228), Lobby (#102), Student Lounge Market (#202)  
**QUANTITY:** 9 ea  
**MODEL NUMBER:** 2101 S0 FT2 US UB VG7 AR0 FC15 GL9 AC  
**FINISH:** Upholstery: Architex / Write-Off / Telfair / Pitch; Legs: Chrome  
**SEAT HEIGHT:** 18.25"  
**WEIGHT:** 15.5lbs  
**DIMENSIONS:** 17.75"W x 32.75"H x 23.00D

chairbuilder.sitonit.net



**NOTES**

STEEL WIRE ROD FRAME WITH AN X-PATTERN BASE, UPHOLSTERED SEATS WITH GLIDES

**VENDOR**

MCR

**VENDOR REP CONTACT**

MAGGIE GOSS -  
MAGGIE@MERCURY  
CONTRACT.COM; FABRIC: AMY  
NEUSEL -  
AMYNEUSEL@ARCHITEX-  
LJH.COM

**MANUFACTURER**

SITONIT

**MANUFACTURER CONTACT**

**REQUIRED ITEMS FOR DESIGNER APPROVAL PRIOR TO FABRICATION**

- CFA       FINISH SAMPLE       FLAME CERT       PROTOTYP E       SEAMING DIAGRAM       SHOP DWGS       STRIKE OFF

**INSTRUCTIONS:**

• **BASIS OF DESIGN**

THE FURNITURE SPECIFIED IN THIS BID HAS BEEN SELECTED TO ESTABLISH THE OVERALL DESIGN INTENT, FUNCTIONALITY, AND QUALITY STANDARDS FOR THE PROJECT. ALL PROPOSED PRODUCTS MUST MEET THE PERFORMANCE, DURABILITY, ERGONOMIC, AND AESTHETIC REQUIREMENTS INDICATED IN THE CONTRACT DOCUMENTS. BIDDERS ARE ENCOURAGED TO PROVIDE EQUIVALENT FURNITURE PRODUCTS FROM MANUFACTURERS OR SUPPLIERS THAT MEET OR EXCEED THE SPECIFIED CRITERIA. SUBSTITUTIONS WILL BE REVIEWED FOR COMPLIANCE WITH MATERIALS, DIMENSIONS, FINISHES, AND FUNCTIONALITY. THE INTENT IS TO ENSURE QUALITY, CONSISTENCY, AND LONG-TERM VALUE WHILE ALLOWING COMPETITIVE BIDDING AMONG QUALIFIED VENDORS. ALL PROPOSALS MUST INCLUDE DETAILED PRODUCT SPECIFICATIONS, WARRANTY INFORMATION, AND DOCUMENTATION DEMONSTRATING

# CH-05b

SITONIT AXYS CHAIR

# WSU TECH NCAT EXPANSION

## #13038R22020

4004 N. WEBB ROAD; BLDG. 400, WICHITA, KS, UNITED STATES, 67226

AREAS: Student Lounge (#207B)  
 QUANTITY: 6 ea  
 MODEL NUMBER: 2101 S0 FT2 US UB VG7 AR0  
 FC15 GL9 AC  
 FINISH: Fabric: Write-Off Vinyl /  
 Architex / Write Off / Telfair /  
 Goldenrod; Base - Chrome  
 SEAT HEIGHT: 18.25"  
 DIMENSIONS: 17.75"W x 32.75"H x 23"D



### NOTES

STEEL WIRE ROD FRAME WITH AN X-PATTERN BASE,  
 UPHOLSTERED SEAT WITH GLIDES.

### VENDOR

MCR

### VENDOR REP CONTACT

MAGGIE GOSS -  
 MAGGIE@MERCURY  
 CONTRACT.COM; FABRIC: AMY  
 NEUSEL -  
 AMYNEUSEL@ARCHITEX-  
 LJH.COM

### MANUFACTURER

SITONIT

### MANUFACTURER CONTACT

### REQUIRED ITEMS FOR DESIGNER APPROVAL PRIOR TO FABRICATION

- CFA     
  FINISH SAMPLE     
  FLAME CERT     
  PROTOTYP E     
  SEAMING DIAGRAM     
  SHOP DWGS     
  STRIKE OFF

### INSTRUCTIONS:

#### • BASIS OF DESIGN

THE FURNITURE SPECIFIED IN THIS BID HAS BEEN SELECTED TO ESTABLISH THE OVERALL DESIGN INTENT, FUNCTIONALITY, AND QUALITY STANDARDS FOR THE PROJECT. ALL PROPOSED PRODUCTS MUST MEET THE PERFORMANCE, DURABILITY, ERGONOMIC, AND AESTHETIC REQUIREMENTS INDICATED IN THE CONTRACT DOCUMENTS. BIDDERS ARE ENCOURAGED TO PROVIDE EQUIVALENT FURNITURE PRODUCTS FROM MANUFACTURERS OR SUPPLIERS THAT MEET OR EXCEED THE SPECIFIED CRITERIA. SUBSTITUTIONS WILL BE REVIEWED FOR COMPLIANCE WITH MATERIALS, DIMENSIONS, FINISHES, AND FUNCTIONALITY. THE INTENT IS TO ENSURE QUALITY, CONSISTENCY, AND LONG-TERM VALUE WHILE ALLOWING COMPETITIVE BIDDING AMONG QUALIFIED VENDORS. ALL PROPOSALS MUST INCLUDE DETAILED PRODUCT SPECIFICATIONS, WARRANTY INFORMATION, AND DOCUMENTATION DEMONSTRATING

# CH-06

SITONIT SONA EXECUTIVE BOARDROOM HIGH BACK CHAIRS - WITH ARMS

# WSU TECH NCAT EXPANSION #13038R22020

4004 N. WEBB ROAD; BLDG. 400, WICHITA, KS, UNITED STATES, 67226

AREAS: Executive Boardroom (#213)  
 QUANTITY: 17 ea  
 MODEL NUMBER: 5723 Y A112 VG3 C16 B3 B7 KP10 PH2 UC  
 FINISH: Seat: SitOnIt/Elite  
 Leather/Black; Pol. Alum.;  
 Back: Black Knit: Pull Handle: Silver; **Arm: Silver; Base: Polished aluminum**  
 SEAT HEIGHT: 17.5" - 20"  
 WEIGHT: 52 lbs  
 DIMENSIONS: 27"W x 37" - 43.5"H x 25"D

chairbuilder.sitonit.net



Elite Leather Plus, Black



### NOTES

SITONIT HIGH-BACK EXECUTIVE CHAIRS WITH KNIT BACK AND PULL HANDLE, FIXED LOOP ARMS; **ENHANCED SYNCHRO MECHANISM, STANDARD CYLINDER, CARPET CASTERS**

### VENDOR

MCR

### VENDOR REP CONTACT

MAGGIE GOSS -  
MAGGIE@MERCURYCONTRACT.COM

### MANUFACTURER

SITONIT

### MANUFACTURER CONTACT

### REQUIRED ITEMS FOR DESIGNER APPROVAL PRIOR TO FABRICATION

- CFA
- FINISH SAMPLE
- FLAME CERT
- PROTOTYP E
- SEAMING DIAGRAM
- SHOP DWGS
- STRIKE OFF

### INSTRUCTIONS:

- BASIS OF DESIGN

# CH-06b

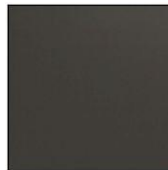
SITONIT SONA EXECUTIVE BOARDROOM HIGH BACK CHAIRS - ARMLESS

# WSU TECH NCAT EXPANSION #13038R22020

4004 N. WEBB ROAD; BLDG. 400, WICHITA, KS, UNITED STATES, 67226

AREAS: Executive Boardroom (#213)  
 QUANTITY: 5 ea  
 MODEL NUMBER: 5723 Y A0 VG3 C16 B3 B7 KP10 PH2 UC  
 FINISH: Seat: SitOnIt/Elite Leather Plus/Black; Base: Polished Alum.; Back: Black Knit: Pull Handle: Silver **Arm: Silver, Base: Polished Alum.**  
 SEAT HEIGHT: 17.5" - 20"  
 WEIGHT: 52 lbs  
 DIMENSIONS: 27"W x 37" - 43.5"H x 25"D

chairbuilder.sitonit.net



Elite Leather Plus, Black



### NOTES

SITONIT HIGH-BACK EXECUTIVE CHAIRS WITH KNIT BACK AND PULL HANDLE, ARMLESS; ENHANCED SYNCHRO MECHANISM, STANDARD CYLINDER, CARPET CASTERS

### VENDOR

MCR

### VENDOR REP CONTACT

MAGGIE GOSS -  
MAGGIE@MERCURYCONTRACT.COM

### MANUFACTURER

SITONIT

### MANUFACTURER CONTACT

### REQUIRED ITEMS FOR DESIGNER APPROVAL PRIOR TO FABRICATION

- CFA
- FINISH SAMPLE
- FLAME CERT
- PROTOTYP E
- SEAMING DIAGRAM
- SHOP DWGS
- STRIKE OFF

### INSTRUCTIONS:

#### • BASIS OF DESIGN

THE FURNITURE SPECIFIED IN THIS BID HAS BEEN SELECTED TO ESTABLISH THE OVERALL DESIGN INTENT, FUNCTIONALITY, AND QUALITY STANDARDS FOR THE PROJECT. ALL PROPOSED PRODUCTS MUST MEET THE PERFORMANCE, DURABILITY, ERGONOMIC, AND AESTHETIC REQUIREMENTS INDICATED IN THE CONTRACT DOCUMENTS. BIDDERS ARE ENCOURAGED TO PROVIDE EQUIVALENT FURNITURE PRODUCTS FROM MANUFACTURERS OR SUPPLIERS THAT MEET OR EXCEED THE SPECIFIED CRITERIA. SUBSTITUTIONS WILL BE REVIEWED FOR COMPLIANCE WITH MATERIALS, DIMENSIONS, FINISHES, AND FUNCTIONALITY. THE INTENT IS TO ENSURE QUALITY, CONSISTENCY, AND LONG-TERM VALUE WHILE ALLOWING COMPETITIVE BIDDING AMONG QUALIFIED VENDORS. ALL PROPOSALS MUST INCLUDE DETAILED PRODUCT SPECIFICATIONS, WARRANTY INFORMATION, AND DOCUMENTATION DEMONSTRATING EQUIVALENCE TO THE DESIGN INTENT.

# CH-08

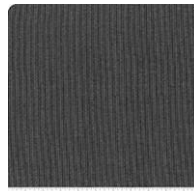
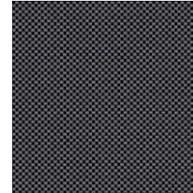
SITONIT WIT TASK CHAIR;  
STANDARD CYLINDER;  
CONFERENCE CHAIR

# WSU TECH NCAT EXPANSION #13038R22020

4004 N. WEBB ROAD; BLDG. 400, WICHITA, KS, UNITED STATES, 67226

AREAS: Conference (#136)  
QUANTITY: 8 ea  
MODEL NUMBER: 2223 F A128 B1 FG2 C16 S13  
B8 MC20 FC1 Z2 UC  
LOCATION: Conference Chair  
FINISH: Mesh: Onyx; Seat: SitOnIt (carded) Dice / Onyx; Lumbar: Silver; Base: Brushed Alum.;  
Frame: Black  
SEAT HEIGHT: 19"  
DIMENSIONS: 26"W x Standard Height  
Cylinder - 40.75"H x 25"D

chairbuilder.sitonit.net



### NOTES

HIGH MESH BACK WITH ADJUSTABLE LUMBAR, HEIGHT ADJUSTABLE ARMS, STANDARD SYHCHRO., STANDARD CYLINDER, ALUMINUM BASE, CARPET CASTERS

VENDOR

MCR

VENDOR REP CONTACT

MAGGIE GOSS -  
MAGGIE@MERCURYCONTRACT.COM

MANUFACTURER

SITONIT

MANUFACTURER CONTACT

### REQUIRED ITEMS FOR DESIGNER APPROVAL PRIOR TO FABRICATION

CFA

FINISH SAMPLE

FLAME CERT

PROTOTYP E

SEAMING DIAGRAM

SHOP DWGS

STRIKE OFF

### INSTRUCTIONS:

• BASIS OF DESIGN

# CH-14

OFS KASURA BOARDROOM  
WAITING CHAIRS-MID BACK

# WSU TECH NCAT EXPANSION #13038R22020

4004 N. WEBB ROAD; BLDG. 400, WICHITA, KS, UNITED STATES, 67226

AREAS: Hall (4) (#207D)  
 QUANTITY: 2 ea  
 MODEL NUMBER: 92036 - Mid Back  
 FINISH: OFS Carded / Allure / Ash / Grade 2; Veneer Wrap: OFS Linen; Sled Base: Polished Chrome  
 SEAT HEIGHT: 18.5"  
 WEIGHT: 34lbs  
 DIMENSIONS: 25"W x 31"H x 28"D

ofs.com



Item	Qty	Material	Finish
Chair	2	OFS Carded / Allure / Ash / Grade 2	Polished Chrome
Veneer	1	OFS Linen	Polished Chrome



### NOTES

OFS MID BACK CHAIR W/ VENEER WRAP; SLED BASE

### VENDOR

M2INC.DESIGN

### VENDOR REP CONTACT

CAMERON MESSERSCHMIDT -  
CAM@M2INC.DESIGN

[HTTPS://WWW.M2INC.DESIGN](https://www.m2inc.design)

### MANUFACTURER

OFS

### MANUFACTURER CONTACT

[HTTPS://OFS.COM](https://ofs.com)

### REQUIRED ITEMS FOR DESIGNER APPROVAL PRIOR TO FABRICATION

- CFA
- FINISH SAMPLE
- FLAME CERT
- PROTOTYP E
- SEAMING DIAGRAM
- SHOP DWGS
- STRIKE OFF

### INSTRUCTIONS:

- BASIS OF DESIGN

THE FURNITURE SPECIFIED IN THIS BID HAS BEEN SELECTED TO ESTABLISH THE OVERALL DESIGN INTENT, FUNCTIONALITY, AND

# CH-15

OFS KASURA LOW BACK

**GUEST CHAIR** W/ ACCENT WRAP & SLED BASE

AREAS: Flex Prefunction (#228)

QUANTITY: 4 ea

MODEL NUMBER: 92035

FINISH: Upholstery: Architex Write-Off  
Ryder/Barrister; Accent Wrap:  
Architex Telfair/Goldenrod;  
Base Chrome

SEAT HEIGHT: 18.25"

WEIGHT: 34lbs

DIMENSIONS: 25"W x 31"H x 26"D

ofs.com

# WSU TECH NCAT EXPANSION

## #13038R22020

4004 N. WEBB ROAD; BLDG. 400, WICHITA, KS, UNITED STATES, 67226



### NOTES

LOW BACK LOUNGE: X-BASE; WRITE-OFF VINYL UPHOLSTERY & ACCENT WRAP

### VENDOR

M2INC.DESIGN

### VENDOR REP CONTACT

CAMERON MESSERSCHMIDT -  
CAM@M2INC.DESIGN

[HTTPS://WWW.M2INC.DESIGN](https://www.m2inc.design)

### MANUFACTURER

OFS

### MANUFACTURER CONTACT

[HTTPS://OFS.COM](https://ofs.com)

### REQUIRED ITEMS FOR DESIGNER APPROVAL PRIOR TO FABRICATION

CFA

FINISH  
SAMPLE

FLAME  
CERT

PROTOTYP  
E

SEAMING  
DIAGRAM

SHOP  
DWGS

STRIKE OFF

### INSTRUCTIONS:

• BASIS OF DESIGN

# CH-18

SITONIT AXYS STOOL -  
COUNTER HEIGHT

# WSU TECH NCAT EXPANSION #13038R22020

4004 N. WEBB ROAD; BLDG. 400, WICHITA, KS, UNITED STATES, 67226

AREAS: Student Lounge (1) (#218B)  
 QUANTITY: 6 ea  
 MODEL NUMBER: 2101 S9 US UB VG7 AR0  
 FC15 GL9 AC  
 FINISH: Chrome Base; Upholstery:  
 Architex /Write-Off Vinyl /  
 Telfair / Goldenrod  
 SEAT HEIGHT: 31.5"  
 DIMENSIONS: 18.5"W x 30"H x 22.5"D

chairbuilder.sitonit.net



### NOTES

AXYS COUNTER HEIGHT STOOL W/ CONTOURING & PADDED SEAT.  
 X-SLED BASE MODERN LOW BACK ON COUNTER STOOLS.  
 DOUBLE-NEEDLE AND FRENCH SEAM BORDER STITCHING. X-  
 PATTERN WIRE ROD BASE; STANDARD GLIDES

### VENDOR

MCR

### VENDOR REP CONTACT

MAGGIE GOSS -  
 MAGGIE@MERCURY  
 CONTRACT.COM; FABRIC: AMY  
 NEUSEL -  
 AMYNEUSEL@ARCHITEX-  
 LJH.COM

### MANUFACTURER

SITONIT

### MANUFACTURER CONTACT

### REQUIRED ITEMS FOR DESIGNER APPROVAL PRIOR TO FABRICATION

- CFA     
  FINISH SAMPLE     
  FLAME CERT     
  PROTOTYP E     
  SEAMING DIAGRAM     
  SHOP DWGS     
  STRIKE OFF

### INSTRUCTIONS:

- BASIS OF DESIGN

THE FURNITURE SPECIFIED IN THIS BID HAS BEEN SELECTED TO ESTABLISH THE OVERALL DESIGN INTENT, FUNCTIONALITY, AND QUALITY STANDARDS FOR THE PROJECT. ALL PROPOSED PRODUCTS MUST MEET THE PERFORMANCE, DURABILITY, ERGONOMIC, AND AESTHETIC REQUIREMENTS INDICATED IN THE CONTRACT DOCUMENTS. BIDDERS ARE ENCOURAGED TO PROVIDE EQUIVALENT FURNITURE PRODUCTS FROM MANUFACTURERS OR SUPPLIERS THAT MEET OR EXCEED THE SPECIFIED CRITERIA. SUBSTITUTIONS WILL BE REVIEWED FOR COMPLIANCE WITH MATERIALS, DIMENSIONS, FINISHES, AND FUNCTIONALITY. THE INTENT IS TO ENSURE

# CH-19

SITONIT AXYS STOOL - BAR HEIGHT

# WSU TECH NCAT EXPANSION #13038R22020

4004 N. WEBB ROAD; BLDG. 400, WICHITA, KS, UNITED STATES, 67226

AREAS: Flex Prefunction (#228)  
 QUANTITY: 12 ea  
 MODEL NUMBER: 2101 s2 US UB VG7 AR0  
 FC15 GL9 AC  
 FINISH: Chrome Base; Upholstery:  
 Architex /Write-Off Vinyl /  
 Telfair / Goldenrod  
 SEAT HEIGHT: 30.25"  
 WEIGHT: 20lbs  
 DIMENSIONS: 19.5"W x 41"H x 22.25"D

chairbuilder.sitonit.net



### NOTES

AXYS BAR STOOL W/ PADDED SEAT. X-SLED BASE. MODERN LOW BACK ON BAR STOOLS. DOUBLE-NEEDLE AND FRENCH SEAM BORDER STITCHING. X-PATTERN WIRE ROD BASE. **INCLUDE GLIDES.**

VENDOR  
MCR

VENDOR REP CONTACT  
MAGGIE GOSS -  
MAGGIE@MERCURY  
CONTRACT.COM; FABRIC: AMY  
NEUSEL -  
AMYNEUSEL@ARCHITEX-  
LJH.COM

MANUFACTURER  
SITONIT

MANUFACTURER CONTACT

### REQUIRED ITEMS FOR DESIGNER APPROVAL PRIOR TO FABRICATION

- CFA       FINISH SAMPLE       FLAME CERT       PROTOTYP E       SEAMING DIAGRAM       SHOP DWGS       STRIKE OFF

### INSTRUCTIONS:

• **BASIS OF DESIGN**

THE FURNITURE SPECIFIED IN THIS BID HAS BEEN SELECTED TO ESTABLISH THE OVERALL DESIGN INTENT, FUNCTIONALITY, AND QUALITY STANDARDS FOR THE PROJECT. ALL PROPOSED PRODUCTS MUST MEET THE PERFORMANCE, DURABILITY, ERGONOMIC, AND AESTHETIC REQUIREMENTS INDICATED IN THE CONTRACT DOCUMENTS. BIDDERS ARE ENCOURAGED TO PROVIDE EQUIVALENT FURNITURE PRODUCTS FROM MANUFACTURERS OR SUPPLIERS THAT MEET OR EXCEED THE SPECIFIED CRITERIA. SUBSTITUTIONS WILL BE REVIEWED FOR COMPLIANCE WITH MATERIALS, DIMENSIONS, FINISHES, AND FUNCTIONALITY. THE INTENT IS TO ENSURE QUALITY, CONSISTENCY, AND LONG-TERM VALUE WHILE ALLOWING COMPETITIVE BIDDING AMONG QUALIFIED VENDORS. ALL

# CH-22b

SITONIT SIDE WIT SIDE  
CHAIR WITH ARMS &  
CASTERS

# WSU TECH NCAT EXPANSION #13038R22020

4004 N. WEBB ROAD; BLDG. 400, WICHITA, KS, UNITED STATES, 67226

AREAS: SIM1 (#130 ), SIM2 (#131 ),  
Office (#128), Office (1) (#127),  
Office (2) (#126), Office (3)  
(#134), Office (4) (#135), Office  
(5) (#141), Private Office  
(#227B), Private Office (1)  
(#227C), SIM3 (#132 ), SIM4  
(#133 )

QUANTITY: 20 ea

MODEL NUMBER: 2221 AR1 US FG10 CS6 MB  
MC20 FC2 AC

FINISH: Back Mesh: Onyx; Frame:  
Silver; Upholstered Seat:  
Stinson/Performance Fabric/  
Hexie/65665/ Ochre

SEAT HEIGHT: 18.5"

WEIGHT: 19.5lbs

DIMENSIONS: 22.5"W x 33.75H x 24.5"D



www.sitonit.net



### NOTES

MESH BACK, ARMS, CASTERS, & UPHOLSTERED SEAT; **HARD FLOOR AND CARPET CASTERS**

VENDOR

MCR

VENDOR REP CONTACT

MAGGIE GOSS -  
MAGGIE@MERCURYCONTRACT.COM - FABRIC: C.S. STINSON: GAY MILLER -  
GMILLER@CFSTINSON.COM

MANUFACTURER

SITONIT

MANUFACTURER CONTACT

### REQUIRED ITEMS FOR DESIGNER APPROVAL PRIOR TO FABRICATION

- CFA       FINISH SAMPLE       FLAME CERT       PROTOTYP E       SEAMING DIAGRAM       SHOP DWGS       STRIKE OFF

### INSTRUCTIONS:

#### • BASIS OF DESIGN

THE FURNITURE SPECIFIED IN THIS BID HAS BEEN SELECTED TO ESTABLISH THE OVERALL DESIGN INTENT, FUNCTIONALITY, AND QUALITY STANDARDS FOR THE PROJECT. ALL PROPOSED PRODUCTS MUST MEET THE PERFORMANCE, DURABILITY, ERGONOMIC, AND AESTHETIC REQUIREMENTS INDICATED IN THE CONTRACT DOCUMENTS. BIDDERS ARE ENCOURAGED TO PROVIDE EQUIVALENT FURNITURE PRODUCTS FROM MANUFACTURERS OR SUPPLIERS THAT MEET OR EXCEED THE SPECIFIED CRITERIA. SUBSTITUTIONS WILL BE REVIEWED FOR COMPLIANCE WITH MATERIALS, DIMENSIONS, FINISHES, AND FUNCTIONALITY. THE INTENT IS TO ENSURE QUALITY, CONSISTENCY, AND LONG-TERM VALUE WHILE ALLOWING COMPETITIVE BIDDING AMONG QUALIFIED VENDORS. ALL PROPOSALS MUST INCLUDE DETAILED PRODUCT SPECIFICATIONS, WARRANTY INFORMATION, AND DOCUMENTATION DEMONSTRATING EQUIVALENCE TO THE DESIGN INTENT.

# CH-22c

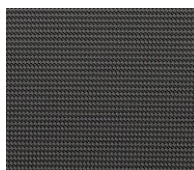
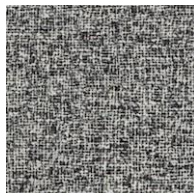
SITONIT WIT EXECUTIVE BOARDROOM MID BACK "SPECTATOR" CHAIRS - ARMS

AREAS: Executive Boardroom (#213)  
QUANTITY: 17 ea  
MODEL NUMBER: 2221 AR1 US FG3 CS5 MB MC20 FC2 AC  
FINISH: Upholstery: SitOnIt Grade 3 / Grid / Caviar; Mesh Back: Onyx; Frame: Silver FC2  
SEAT HEIGHT: 18.5"  
WEIGHT: 19.5  
DIMENSIONS: 22.5"W x 33.75"H x 24.5"D

chairbuilder.sitonit.net

# WSU TECH NCAT EXPANSION #13038R22020

4004 N. WEBB ROAD; BLDG. 400, WICHITA, KS, UNITED STATES, 67226



### NOTES

SITONIT; WIT CHAIR; FIXED ARMS; UPHOLSTERED SEAT, MESH BACK, CARPET CASTERS

### VENDOR

MCR

### VENDOR REP CONTACT

MAGGIE GOSS -  
MAGGIE@MERCURYCONTRACT.COM

### MANUFACTURER

SITONIT

### MANUFACTURER CONTACT

### REQUIRED ITEMS FOR DESIGNER APPROVAL PRIOR TO FABRICATION

- CFA
- FINISH SAMPLE
- FLAME CERT
- PROTOTYPE
- SEAMING DIAGRAM
- SHOP DWGS
- STRIKE OFF

INSTRUCTIONS:

# CH-22d

SITONIT WIT EXECUTIVE BOARDROOM MID BACK "SPECTATOR" CHAIRS - ARMLESS

AREAS: Executive Boardroom (#213)  
QUANTITY: 5 ea  
MODEL NUMBER: 2221 AR0 US FG3 CS5 MB MC20 FC2 AC  
FINISH: Upholstery: SitOnIt Grade 3 / Grid / Caviar; Mesh Back: Onyx; Frame: Silver FC2  
SEAT HEIGHT: 18.5"  
WEIGHT: 15.5 lbs  
DIMENSIONS: 21.75"W x 33.75"H x 24.5"D

chairbuilder.sitonit.net

# WSU TECH NCAT EXPANSION #13038R22020

4004 N. WEBB ROAD; BLDG. 400, WICHITA, KS, UNITED STATES, 67226



### NOTES

SITONIT; WIT CHAIR; ARMLESS; UPHOLSTERED SEAT, MESH BACK, CARPET CASTERS

### VENDOR

MCR

### VENDOR REP CONTACT

MAGGIE GOSS -  
MAGGIE@MERCURYCONTRACT.COM

### MANUFACTURER

SITONIT

### MANUFACTURER CONTACT

### REQUIRED ITEMS FOR DESIGNER APPROVAL PRIOR TO FABRICATION

- CFA
- FINISH SAMPLE
- FLAME CERT
- PROTOTYP E
- SEAMING DIAGRAM
- SHOP DWGS
- STRIKE OFF

### INSTRUCTIONS:

- BASIS OF DESIGN

# CH-22e

SITONIT - WIT SIDE  
CHAIRS W/ ARMS &  
CASTERS

# WSU TECH NCAT EXPANSION #13038R22020

4004 N. WEBB ROAD; BLDG. 400, WICHITA, KS, UNITED STATES, 67226

AREAS: Brief (1) (#118B), Brief (2) (#118C), Brief (3) (#118D), Brief (4) (#118E), Executive Office (#227D), Flight Open Office (#129), Hub (#140), Staff Office Suite (#227), Study Room (#219)

QUANTITY: 40 ea

MODEL NUMBER: 2221 AR1 US FG7 CS6 MB MC20 FC2 AC

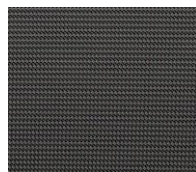
FINISH: Upholstery: Grade 7 Placeholder; Mesh Back: Onyx; Frame: Silver FC2

SEAT HEIGHT: 18.5"

WEIGHT: 19.5

DIMENSIONS: 22.5"W x 33.75"H x 24.5"D

chairbuilder.sitonit.net



### NOTES

SITONIT; WIT CHAIR; FIXED ARMS; UPHOLSTERED SEAT, MESH BACK, **HARD FLOOR & CARPET CASTERS**

### VENDOR

MCR

### VENDOR REP CONTACT

MAGGIE GOSS -  
MAGGIE@MERCURYCONTRACT.COM

### MANUFACTURER

SITONIT

### MANUFACTURER CONTACT

### REQUIRED ITEMS FOR DESIGNER APPROVAL PRIOR TO FABRICATION

CFA

FINISH SAMPLE

FLAME CERT

PROTOTYP E

SEAMING DIAGRAM

SHOP DWGS

STRIKE OFF

### INSTRUCTIONS:

• BASIS OF DESIGN

# DSK-01

APPLAUSE  
TEACHER/INSTRUCTOR  
STATION ADJUSTABLE  
HEIGHT

# WSU TECH NCAT EXPANSION #13038R22020

4004 N. WEBB ROAD; BLDG. 400, WICHITA, KS, UNITED STATES, 67226

AREAS: Class (#206), Classroom 1 (#148), Classroom 2 (#223), Classroom 3 (#226), Classroom 4 (#212), Engineering design & 3D Modeling Lab (#210), Flex (#106), Robotics Computer Lab (#146), SMART LAB (#105)

QUANTITY: 10 ea

MODEL NUMBER: AH4830R-T-HPL-GRP-S-EY - H7B - K4S ; PS-110B; WM-12

FINISH: Top: Grey HPL; Base Black; Black Power Access.

WEIGHT: 125lbs

DIMENSIONS: 48"W x Adj.H x 30"D



ITEM	DESCRIPTION	QTY	UNIT
1	Table	10	EA

### NOTES

APPLAUSE TRAINING TABLE WITH HPDL TOP, OFFSET ELECTRONIC ADJUSTABLE HEIGHT, STANDARD TUBULAR CASTER BASE (STANDARD RANGE 27" - 47"H); UNDER SURFACE POWER MOUNT; INCLUDE WIRE MANAGEMENT

VENDOR  
M2INC.DESIGN

VENDOR REP CONTACT  
CAMERON MESSERSCHMIDT -  
CAM@M2INC.DESIGN

[HTTPS://WWW.M2INC.DESIGN](https://www.m2inc.design)

MANUFACTURER  
OFS

MANUFACTURER CONTACT  
[HTTPS://OFS.COM](https://ofs.com)

### REQUIRED ITEMS FOR DESIGNER APPROVAL PRIOR TO FABRICATION

- CFA
- FINISH SAMPLE
- FLAME CERT
- PROTOTYP E
- SEAMING DIAGRAM
- SHOP DWGS
- STRIKE OFF

# TB-03

PARALLON CAFE TABLE - ROUND

# WSU TECH NCAT EXPANSION #13038R22020

4004 N. WEBB ROAD; BLDG. 400, WICHITA, KS, UNITED STATES, 67226

AREAS: Hub (#140)  
 QUANTITY: 1 ea  
 MODEL NUMBER: Top: 3271 TR4242 TL62 GR2  
 TE5 TBT4; Base: 3272 TR4242  
 TBT4 BF03 TH29  
 FINISH: Top: GREY / TL62 HPL: Edge:  
 Self; Base: Black BF03  
 WEIGHT: 101 lbs  
 DIMENSIONS: 29.6"H x 42" Dia.D

chairbuilder.sitonit.net



### NOTES

HPL ROUND TOP; 42" DIA.; **GRADE 2 TOP, FLAT EDGE**

### VENDOR

MCR

### VENDOR REP CONTACT

MAGGIE GOSS -  
MAGGIE@MERCURYCONTRACT.COM

### MANUFACTURER

SITONIT

### MANUFACTURER CONTACT

### REQUIRED ITEMS FOR DESIGNER APPROVAL PRIOR TO FABRICATION

- CFA       FINISH SAMPLE       FLAME CERT       PROTOTYP E       SEAMING DIAGRAM       SHOP DWGS       STRIKE OFF

### INSTRUCTIONS:

#### • BASIS OF DESIGN

THE FURNITURE SPECIFIED IN THIS BID HAS BEEN SELECTED TO ESTABLISH THE OVERALL DESIGN INTENT, FUNCTIONALITY, AND QUALITY STANDARDS FOR THE PROJECT. ALL PROPOSED PRODUCTS MUST MEET THE PERFORMANCE, DURABILITY, ERGONOMIC, AND AESTHETIC REQUIREMENTS INDICATED IN THE CONTRACT DOCUMENTS. BIDDERS ARE ENCOURAGED TO PROVIDE EQUIVALENT FURNITURE PRODUCTS FROM MANUFACTURERS OR SUPPLIERS THAT MEET OR EXCEED THE SPECIFIED CRITERIA. SUBSTITUTIONS WILL BE REVIEWED FOR COMPLIANCE WITH MATERIALS, DIMENSIONS, FINISHES, AND FUNCTIONALITY. THE INTENT IS TO ENSURE QUALITY, CONSISTENCY, AND LONG-TERM VALUE WHILE ALLOWING COMPETITIVE BIDDING AMONG QUALIFIED VENDORS. ALL PROPOSALS MUST INCLUDE DETAILED PRODUCT SPECIFICATIONS, WARRANTY INFORMATION, AND DOCUMENTATION DEMONSTRATING EQUIVALENCE TO THE DESIGN INTENT.

# TB-04

OFS INTERMIX TABLE TOP;  
BASES; UNDERMOUNTED  
POWER BARS; MOCKETT  
WIRE MGMT. WM16-SNAKE

AREAS: Conference (#136)

QUANTITY: 1 ea

MODEL NUMBER: (2)CC-35MTB3; (1) CC-35MTB4 (1) Top:CC-C9642RT; (2)PWR. GROMMETS: PS-81S, Wire Mgmt. (2) WM16

SIZE: 96" L x 42" W

FINISH: Luster Grey Base; Peak HPDL; Slate Gray Knife Edge

DIMENSIONS: 30"H

ofs.com

# WSU TECH NCAT EXPANSION #13038R22020

4004 N. WEBB ROAD; BLDG. 400, WICHITA, KS, UNITED STATES, 67226



CONFERENCE TABLE TB-04 : OFS / Intermix Table with Knife Edge HPDL 42" x 96" top and (2) Hugh Bases & (1) O Base; (2) PS-81S Power Grommet

TOP: Peak HPDL  
KNIFE EDGE: ~~Black~~ Slate Grey  
HUGH BASE: Luster Grey  
O BASE: Luster Grey  
MOCKETT WIRE MANAGER: Metallic Silver

## CONFERENCE ROOM #136



POWER GROMMET:  
(2) OFS / PS-81S:  
- One USB A charging module (Both Sides)  
- RJ-45 Cat6data jack  
- One HDMI Port  
- Two Grommet openings for wire pass-thru  
- (3) 10v outlets (both sides)  
- (1) VGA Port  
- 10' Power Cord

WIRE MGMT:  
OFS Velcro Wire Holders  
WIRE MGMT:  
Mockett Snake

### NOTES

INTERMIX HPDL LAMINATE TOP W/ KNIFE EDGE; (2) HUGH BASES; (1) O BASE; (2) POWER GROMMETS PS-81S; (1) Q-WM-V4 VELCRO WIRE MANAGERS; (1) MOCKETT SNAKE WIRE MANAGEMENT

### VENDOR

M2INC.DESIGN

### VENDOR REP CONTACT

CAMERON MESSERSCHMIDT -  
CAM@M2INC.DESIGN

[HTTPS://WWW.M2INC.DESIGN](https://www.m2inc.design)

### MANUFACTURER

OFS & MOCKETT

### MANUFACTURER CONTACT

### INSTRUCTIONS:

#### • BASIS OF DESIGN

THE FURNITURE SPECIFIED IN THIS BID HAS BEEN SELECTED TO ESTABLISH THE OVERALL DESIGN INTENT, FUNCTIONALITY, AND QUALITY STANDARDS FOR THE PROJECT. ALL PROPOSED PRODUCTS MUST MEET THE PERFORMANCE, DURABILITY, ERGONOMIC, AND AESTHETIC REQUIREMENTS INDICATED IN THE CONTRACT DOCUMENTS. BIDDERS ARE ENCOURAGED TO PROVIDE EQUIVALENT

# TB-26

SITONIT PARALLON  
COFFEE TABLE

# WSU TECH NCAT EXPANSION #13038R22020

4004 N. WEBB ROAD; BLDG. 400, WICHITA, KS, UNITED STATES, 67226

AREAS: Flex Prefunction (#228), Hub (#140)  
QUANTITY: 5 ea  
MODEL NUMBER: Top: Top:3271 TS3030 TL62  
GR2 TE5 TBT4; Base: 3272 TS3030 TBT4 BF03 TH20 LS18  
FINISH: HPL Top; Gray; X-Base: Black  
DIMENSIONS: 30"W x 20"H x 30"D

chairbuilder.sitonit.net



### NOTES

COFFEE TABLE, 30" SQUARE TOP WITH FLAT EDGE; HPL GRADE 2 TOP; X-BASE

### VENDOR

MCR

### VENDOR REP CONTACT

MAGGIE GOSS -  
MAGGIE@MERCURYCONTRACT.COM

### MANUFACTURER

SITONIT

### MANUFACTURER CONTACT

### REQUIRED ITEMS FOR DESIGNER APPROVAL PRIOR TO FABRICATION

- CFA
- FINISH SAMPLE
- FLAME CERT
- PROTOTYP E
- SEAMING DIAGRAM
- SHOP DWGS
- STRIKE OFF

### INSTRUCTIONS:

#### • BASIS OF DESIGN

THE FURNITURE SPECIFIED IN THIS BID HAS BEEN SELECTED TO ESTABLISH THE OVERALL DESIGN INTENT, FUNCTIONALITY, AND QUALITY STANDARDS FOR THE PROJECT. ALL PROPOSED PRODUCTS MUST MEET THE PERFORMANCE, DURABILITY, ERGONOMIC, AND AESTHETIC REQUIREMENTS INDICATED IN THE CONTRACT DOCUMENTS. BIDDERS ARE ENCOURAGED TO PROVIDE EQUIVALENT FURNITURE PRODUCTS FROM MANUFACTURERS OR SUPPLIERS THAT MEET OR EXCEED THE SPECIFIED CRITERIA. SUBSTITUTIONS WILL BE REVIEWED FOR COMPLIANCE WITH MATERIALS, DIMENSIONS, FINISHES, AND FUNCTIONALITY. THE INTENT IS TO ENSURE QUALITY, CONSISTENCY, AND LONG-TERM VALUE WHILE ALLOWING COMPETITIVE BIDDING AMONG QUALIFIED VENDORS. ALL PROPOSALS MUST INCLUDE DETAILED PRODUCT SPECIFICATIONS, WARRANTY INFORMATION, AND DOCUMENTATION DEMONSTRATING EQUIVALENCE TO THE DESIGN INTENT.

# TB-27

SITONIT PARALLON -  
STANDARD HEIGHT  
SQUARE 36" TABLE

# WSU TECH NCAT EXPANSION #13038R22020

4004 N. WEBB ROAD; BLDG. 400, WICHITA, KS, UNITED STATES, 67226

AREAS: MEZZ (1) (#229)  
QUANTITY: 3 ea  
MODEL NUMBER: Top: 3271 TS3636 TL62 GR1  
TE5 TBT4; Base: 3272 TS3636  
TBT4 BF03 TH29 LS18  
FINISH: Top: Grey; TL62 Base: Black  
Powder Coat  
DIMENSIONS: 36"W x 28.5"H x 36"D



Parallon Cafe Table Top: 3271 TS3636 TL24 GR1 TS TBT4
Top: X-Base
Top: Square
Top: 36" Square Top
Top: Laminate Grade 1
Top: Folkstone Grey
Top: Flat Edge
Parallon Cafe Table: 3272 TS3636 TBT4 BF03 TH29 LS18
Base: X-Base
Base: Square
Base: 36" Square Top
Base: 29" Table Height
Base: Stack
Base: Fixed / Glides

### NOTES

TOP: GREY TL62, SQUARE - 36" X 36" **GRADE 2 HPL**; X-BASE

VENDOR

VENDOR CONTACT

MCR

MAGGIE GOSS

MANUFACTURER

MANUFACTURER CONTACT

SITONIT

### REQUIRED ITEMS FOR DESIGNER APPROVAL PRIOR TO FABRICATION

- CFA
- FINISH SAMPLE
- FLAME CERT
- PROTOTYP E
- SEAMING DIAGRAM
- SHOP DWGS
- STRIKE OFF

### INSTRUCTIONS:

#### • BASIS OF DESIGN

THE FURNITURE SPECIFIED IN THIS BID HAS BEEN SELECTED TO ESTABLISH THE OVERALL DESIGN INTENT, FUNCTIONALITY, AND QUALITY STANDARDS FOR THE PROJECT. ALL PROPOSED PRODUCTS MUST MEET THE PERFORMANCE, DURABILITY, ERGONOMIC, AND AESTHETIC REQUIREMENTS INDICATED IN THE CONTRACT DOCUMENTS. BIDDERS ARE ENCOURAGED TO PROVIDE EQUIVALENT FURNITURE PRODUCTS FROM MANUFACTURERS OR SUPPLIERS THAT MEET OR EXCEED THE SPECIFIED CRITERIA. SUBSTITUTIONS WILL BE REVIEWED FOR COMPLIANCE WITH MATERIALS, DIMENSIONS, FINISHES, AND FUNCTIONALITY. THE INTENT IS TO ENSURE QUALITY, CONSISTENCY, AND LONG-TERM VALUE WHILE ALLOWING COMPETITIVE BIDDING AMONG QUALIFIED VENDORS. ALL PROPOSALS MUST INCLUDE DETAILED PRODUCT SPECIFICATIONS, WARRANTY INFORMATION, AND DOCUMENTATION DEMONSTRATING EQUIVALENCE TO THE DESIGN INTENT.

# TB-24

SITONIT PARALLON TABLE -  
STANDARD HEIGHT

# WSU TECH NCAT EXPANSION #13038R22020

4004 N. WEBB ROAD; BLDG. 400, WICHITA, KS, UNITED STATES, 67226

AREAS: Break Room (#227A), Flex  
Prefunction (#228), MEZZ (1)  
(#229)

QUANTITY: 14 ea

MODEL NUMBER: Top: 3271 TS3030 TL62 GR2  
TE5 TBT4; Base: 3272 TS3030  
TBT4 BF03 TH29 LS18

FINISH: HPL Top: Grey TL62; Base:  
Black

DIMENSIONS: 30"W x 28.5"H x 30"D

chairbuilder.sitonit.net



Parallon Caffe Table Top: 3271 TS3030 TL24 GR1 TE5 TBT4
Top: X-Base
Top: Square
Top: 30" Square Top
Top: Laminate Grade 1
Top: Frolotone Grey
Top: Flat Edge
Parallon Caffe Table: 3272 TS3030 TBT4 BF03 TH29
Base: LS18
Base: X-Base
Base: Square
Base: 30" Square Top
Base: 29" Table Height
Base: Black
Base: Flared / Glides

### NOTES

CAFE TABLE, 30" SQUARE TOP WITH FLAT EDGE; HPL TOP; X-BASE

### VENDOR

MCR

### VENDOR REP CONTACT

MAGGIE GOSS -  
MAGGIE@MERCURYCONTRACT.COM

### MANUFACTURER

SITONIT

### MANUFACTURER CONTACT

### REQUIRED ITEMS FOR DESIGNER APPROVAL PRIOR TO FABRICATION

- CFA       FINISH SAMPLE       FLAME CERT       PROTOTYP E       SEAMING DIAGRAM       SHOP DWGS       STRIKE OFF

### INSTRUCTIONS:

#### • BASIS OF DESIGN

THE FURNITURE SPECIFIED IN THIS BID HAS BEEN SELECTED TO ESTABLISH THE OVERALL DESIGN INTENT, FUNCTIONALITY, AND QUALITY STANDARDS FOR THE PROJECT. ALL PROPOSED PRODUCTS MUST MEET THE PERFORMANCE, DURABILITY, ERGONOMIC, AND AESTHETIC REQUIREMENTS INDICATED IN THE CONTRACT DOCUMENTS. BIDDERS ARE ENCOURAGED TO PROVIDE EQUIVALENT FURNITURE PRODUCTS FROM MANUFACTURERS OR SUPPLIERS THAT MEET OR EXCEED THE SPECIFIED CRITERIA. SUBSTITUTIONS WILL BE REVIEWED FOR COMPLIANCE WITH MATERIALS, DIMENSIONS, FINISHES, AND FUNCTIONALITY. THE INTENT IS TO ENSURE QUALITY, CONSISTENCY, AND LONG-TERM VALUE WHILE ALLOWING COMPETITIVE BIDDING AMONG QUALIFIED VENDORS. ALL PROPOSALS MUST INCLUDE DETAILED PRODUCT SPECIFICATIONS, WARRANTY INFORMATION, AND DOCUMENTATION DEMONSTRATING EQUIVALENCE TO THE DESIGN INTENT.

# WHTBD

CLARUS FLOAT MOUNT  
MAGNETIC GLASSBOARDS

# WSU TECH NCAT EXPANSION #13038R22020

4004 N. WEBB ROAD; BLDG. 400, WICHITA, KS, UNITED STATES, 67226

**AREAS:** Air Mobility Lab (#222), Brief (1) (#118B), Brief (2) (#118C), Brief (3) (#118D), Brief (4) (#118E), Class (#206), Classroom 1 (#148), Classroom 2 (#223), Classroom 3 (#226), Classroom 4 (#212), CONTROL/PLC LAB (#145), ELECTRICAL LAB (#149), Engineering design & 3D Modeling Lab (#210), General AMT Academy (1) (#205), MECHANICAL LAB (#147), Robotics Computer Lab (#146), ROBOTICS TRAINING CENTER (#144), UAS/Drones Lab (1) (#214)

**QUANTITY:** 19 ea  
**MODEL NUMBER:** Varies: Include items as Noted in Section  
**FINISH:** Colors by Clarus  
**WEIGHT:** 4.5psf = 288lbs  
**DIMENSIONS:** Dimensions:(2) 96"W x 48"H boards installed abutted H x 6mm GlassD

[www.clarus.com](http://www.clarus.com)

**VENDOR:** MCR  
**VENDOR REP CONTACT:** MAGGIE GOSS - MAGGIE@MERCURYCONTRACT.COM

**MANUFACTURER:** CLARUS  
**MANUFACTURER CONTACT:**



### NOTES

SURFACE WALL-MOUNTED SYSTEM. USE (2) 8' X 4' BOARDS INSTALLED ABUTTED TO ACHIEVE A 192" LENGTH. WHTBD CODE SHALL INCLUDE; 4'H X 8'W BOARDS(SEE BELOW FOR QUANTITIES); CLEAT MOUNTS, (1) ACCESSORY KIT: ((1)MAG. MARKER CUP; (1) DRY ERASE MARKER; (1) ROUND MAGNET; (1); MAGNETIC ERASER.)) PER BOARD.

- QUANTITY CLARIFICATION: 32 TOTAL BOARDS
- (2) BOARDS SHALL BE ABUTTED IN THE FOLLOWING ROOMS:
  - #144 TRAINING CENTER
  - #145 LAB
  - #146 ROBOTICS LAB
  - #147 LAB
  - #148 CLASSROOM
  - #149 ELEC. LAB
  - #205 GEN. ACADEMY
  - #206 CLASSROOM
  - #210 CLASSROOM
  - #212 CLASSROOM
  - #214 UAS DRONES LAB
  - #222 AIR MOBILITY LAB
  - #223 CLASSROOM
  - #226 CLASSROOM
- (1) BOARD EACH SHALL BE IN THE FOLLOWING ROOMS AND SHALL INCLUDE (1) ACCESSORY KIT:
  - #118B
  - #118C
  - #118D
  - #118E

### INSTRUCTIONS:

#### • BASIS OF DESIGN

THE FURNITURE SPECIFIED IN THIS BID HAS BEEN SELECTED TO ESTABLISH THE OVERALL DESIGN INTENT, FUNCTIONALITY, AND QUALITY STANDARDS FOR THE PROJECT. ALL PROPOSED PRODUCTS MUST MEET THE PERFORMANCE, DURABILITY, ERGONOMIC, AND AESTHETIC REQUIREMENTS INDICATED IN THE CONTRACT DOCUMENTS. BIDDERS ARE ENCOURAGED TO PROVIDE EQUIVALENT FURNITURE PRODUCTS FROM MANUFACTURERS OR SUPPLIERS THAT MEET OR EXCEED THE SPECIFIED CRITERIA. SUBSTITUTIONS WILL BE REVIEWED FOR COMPLIANCE WITH MATERIALS, DIMENSIONS, FINISHES, AND FUNCTIONALITY. THE INTENT IS TO ENSURE QUALITY, CONSISTENCY, AND LONG-TERM VALUE WHILE ALLOWING COMPETITIVE BIDDING AMONG QUALIFIED VENDORS. ALL

**WS-03**

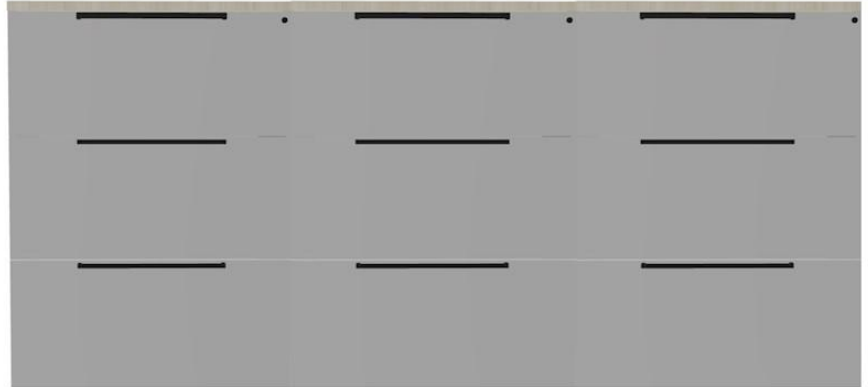
OFS: STAKS LAT. FILE  
ISLAND WITH COMMON  
TOP (SPECIAL)

AREAS: Flight Open Office (#129)  
QUANTITY: 1 ea

ofs.com

**WSU TECH NCAT EXPANSION  
#13038R22020**

4004 N. WEBB ROAD; BLDG. 400, WICHITA, KS, UNITED STATES, 67226



**NOTES**

OFS; INCLUDE ALL SKU'S IN THIS ONE LINE ITEM; CONTACT CAMERON MESSERSCHMIDT FOR BOM

**FINISHES:**

TOP: HPDL PEAK; FILING GRAY; DRAWER PULLS: BLACK

**VENDOR**

M2INC.DESIGN

**VENDOR REP CONTACT**

CAMERON MESSERSCHMIDT -  
CAM@M2INC.DESIGN

**BILL OF MATERIALS INCLUDED IN : (1) WS-03**

6-N3642LF3		Staks, 36"w x 22"d x 42"h Lateral File (with Top), 3 Drawer Lateral File	4
Material	T	TFL	
Top Finish	~W/W	TFL Wood Grain with 2mm PP Edge	
Top Finish	PK2-F	Peak - [Flat Textured]	
Edge Finish, TFL	PK2-F	Peak - [Flat Textured]	
Chassis Finish	PK2-F	Peak - [Flat Textured]	
Drawer Finish	PK2-F	Peak - [Flat Textured]	
Back	LXT	Finished	
Lock	LCK1	Requires 1 Lock Core - Specific Key (Lock Sets Ordered Separately)	
Pull	Parallel	Parallel	
Pull Finish	<b>BLACK</b>	Undecided Powdercoat	
NS6-1128914		Staks Tops 72"W X 44"D X 1"H ----- (6-MCT-72/36) Rectangle hpl top w/pp edge SPECIAL FEATURE: size Used as common top under 36"w lateral files. (see img)	1