

**COUNTER STOOL, CH-04:** SiOnIt Axis Counter height stool w/ metal X-Legs  
**CHAIR, CH-05:** SiOnIt Axis Side Chair w/ metal X-Legs X-Base  
**UPHOLSTERY:** Architek / Write-Off / Tallair Plush  
**BASE:** Chrome

**COUNTER STOOLS & SIDE CHAIR #102A**

**TASK CHAIR CH-10:** Herman Miller Mira 2 ergonomic task chair / standard hgt. Tilt, Lumbar, Adj. Poly arms, Mesh back, Triflex seat (REF. spec sheet for pre-approved alternates)  
**BACK:** Triflex / Graphite  
**FRAME:** Graphite  
**SEAT:** Airweave / Graphite

**LOUNGE CHAIR CH-03:** OFS Lona Swivel UPHOLSTERY: Architek / Write-Off / Thesis / Nestle  
**FINISHES:** Base: Luster Gray Powder coat  
**SEAT:** Airweave / Graphite

**WELCOME #102A**

**OCCASIONAL TABLE TB-05:** Maive 30" Coffee table, Metal Geometric base.  
**FINISHES:** Base: Luster Gray Powder coat  
**TOP:** Milky Way Solid Surface

**TYPICAL PRIVATE OFFICE**

**TOP:** HPDL / OFS Peak  
**CHASSIS:** HPDL OFS Peak  
**TACKBOARD:** Arbor / Stratus  
**ACCENT DOORS:** Frosted Acrylic

**L-SHAPED DESK CG-01-R or CG-01-L:** OFS Stacks, height adjustable desk, Wall mounted storage components, back board: Storage Wardrobe  
**WOOD LOOK LAMINATE:** Peak  
**TACKBOARD:** Arbor / Stratus

**SIDE CHAIR CH-22b:** SiOnIt WIT chair, Mesh back / upholstered seat with arms & casters.  
**BACK:** Mesh  
**FRAME:** Silver  
**SEAT:** Luster / Performance Fabric/telex / 65665 / Ochre

**TASK CHAIR CH-10:** Herman Miller Mira 2 ergonomic task chair / standard hgt. Tilt, Lumbar, Adj. Poly arms, Mesh back, Triflex seat, Ref. spec sheets for pre-approved alternates  
**BACK:** Triflex / Graphite  
**FRAME:** Graphite  
**SEAT:** Airweave / Graphite

**LOBBY #102**

**LOUNGE CHAIR CH-03:** OFS Lona High Back Chair w/ wing around headrest, and return to center swivel Return to Center X-Base  
**UPHOLSTERY:** Architek / Write-Off / Interlock / Cinder  
**BASE:** Brushed Nickel

**OCCASIONAL TABLE TB-15:** High/Low square coffee table  
**FINISHES:** Base: Polished Aluminum  
**TOP:** Wilsonart / Designer White, ABS edge

**HUB #140**

**WORKSTATIONS - HUB - WS-01:** (10) OFS / Parallon Cafe Table, 42" Round, X-Base  
**TOP:** Folkstone Grey, self edge  
**BASE:** Black

**MEETING TABLE TB-26:** SiOnIt Parallon Cafe Table, 30" Square, X-Base  
**TOP:** Folkstone Grey, self edge  
**BASE:** Black

**SIDE CHAIR CH-22b:** SiOnIt WIT chair, Mesh back / upholstered seat with arms, & casters.  
**BACK:** Mesh  
**FRAME:** Silver  
**SEAT:** Architek / Propel / Gris / COM

**TASK CHAIR CH-10:** Herman Miller Mira 2 ergonomic task chair / standard hgt. Tilt, Lumbar, Adj. Poly arms, Mesh back, Triflex seat, Ref. spec sheets for pre-approved alternates  
**BACK:** Triflex / Graphite  
**FRAME:** Graphite  
**SEAT:** Airweave / Graphite

**OCCASIONAL TABLE TB-07:** OFS Strap Table without strap top  
**TOP:** HPDL / OFS Peak  
**POST:** Luster Grey  
**DISC BASE:** Luster Grey

**CALM #116**

**MEETING TABLE TB-12:** OFS / Nineteen20 Table / 30" laminate top and edge / Low profile Disc Base  
**TOP:** OFS Peak  
**BASE:** Onyx

**WORKSTATION WS-02:** OFS / Stratus

**TOP:** HPDL OFS Grey  
**CHASSIS:** HPDL OFS Peak  
**TACKBOARD:** Arbor Stratus  
**ACCENT DOORS:** Frosted acrylic

**STORAGE ISLAND WS-03:** OFS / Stacks Lateral File with Common Laminate top

**TOP:** HPDL / OFS Peak  
**FILES:** OFS / Luster Grey

**MEETING TABLE TB-12:** OFS / Nineteen20 Table / 30" laminate top and edge / Low profile Disc Base  
**TOP:** OFS Peak  
**BASE:** Onyx

**SIDE CHAIR CH-22b:** SiOnIt WIT chair, Mesh back / upholstered seat with arms, & casters.  
**BACK:** Mesh  
**FRAME:** Silver  
**SEAT:** Architek Write-Off / Propel / Gris / COM

**TASK CHAIR CH-10:** Herman Miller Mira 2 ergonomic task chair / standard hgt. Tilt, Lumbar, Adj. Poly arms, Mesh back, Triflex seat, Ref. spec sheets for pre-approved alternates  
**BACK:** Triflex / Graphite  
**FRAME:** Graphite  
**SEAT:** Airweave / Graphite

**FLIGHT OPEN OFFICE #129**

**L-Shaped Desk - CG-04:** OFS / Stacks - Shaped Desk, height adjustable.  
**TOP:** HPDL OFS Grey  
**CHASSIS:** HPDL OFS Peak  
**TACKBOARD:** Arbor Stratus  
**ACCENT DOORS:** Frosted acrylic  
**DOOR PULLS:** Black

**TASK CHAIR CH-10:** Herman Miller Mira 2 ergonomic task chair / standard hgt. Tilt, Lumbar, Adj. Poly arms, Mesh back, Triflex seat, Ref. spec sheets for pre-approved alternates  
**BACK:** Triflex / Graphite  
**FRAME:** Graphite  
**SEAT:** Airweave / Graphite

**LATERAL FILE LF-01:** GLOBAL INDUSTRIES Interroll series, Metal Lateral File, 30W x 19D x 64H, 2-High, locking  
**CABINET:** Black

**DISPATCH #118 F**

**CONFERENCE TABLE TB-04:** OFS / Interim Tall with Knite Edge HPDL 42" x 96" top and (2) Hugh Bases & (1) O Base, (2) PS-815 Power Grommet  
**TOP:** Peak HPDL  
**KNIFE EDGE:** Black  
**HUGH BASE:** Luster Grey  
**O BASE:** Luster Grey  
**MOCKETT WIRE MANAGER:** Metallic Silver

**POWER GROMMET:** (2) OFS PS-815 - One USB A charging module (Both Sides) - R4-45 Cordless Jack - One HDMI Port - Two Grommet openings for wire passage - (3) 10v outlets (both sides) - (1) VGA Port - 1' Power Cord

**CONFERENCE CHAIR CH-08:** SiOnIt / High Back task chair with adjustable lumbar, standard synchro III, Adj. Arms, standard height cylinder  
**BACK:** Black Mesh  
**SEAT:** SiOnIt / Disc / Onyx  
**BASE:** Brushed Aluminum  
**ARMS:** Black

**WIRE MGMT:** OFS Vetro Wire Holders  
**WIRE MGMT:** Mockett Snake

**CONFERENCE ROOM #136**



**COUNTER HEIGHT STOOL CH-18:** SiOnIt Axya  
Bar height stool w/ metal X-Legs  
**UPHOLSTERY:** Archflex / Write-Off / Telfair / Goldenrod  
**BASE:** Chrome

**PARSONS TABLE TB-17:** OFS  
Krita Table / Counter Height w/  
Power Module, VGA Coupler for  
Power Cord / (1) USB-A Module  
(1) HDMI Coupler  
**LAMINATE:** OFS Peak

**PRISM OTTOMAN CH-13c:**  
HIGHTOWER / Prism  
Honeycomb Ottoman  
**FABRIC:** Simson / performance  
vinyl / Savile / SVL22 / Flannel

**PRISM OTTOMAN CH-13b:**  
HIGHTOWER / Prism Single  
Bench  
**FABRIC:** Simson / performance  
vinyl / Savile / SVL22 / Flannel

**PRISM DOUBLE BENCH  
W/ BACK CH-13:**  
HIGHTOWER / Prism  
Double Bench w/ Back,  
Power, and retractable  
Cord  
**FABRIC:** Simson /  
Performance vinyl / Criss  
Cross 2.0 / CRS242 /  
Desert

**BAR STOOL CH-04b:** SiOnIt Axya Counter height stool w/  
metal X-Legs  
**CHAIR CH-06:** SiOnIt Axya Side Chair w/ metal X-Legs  
X-Base  
**UPHOLSTERY:** Archflex / Write-Off / Telfair / Pitch  
**BASE:** Chrome

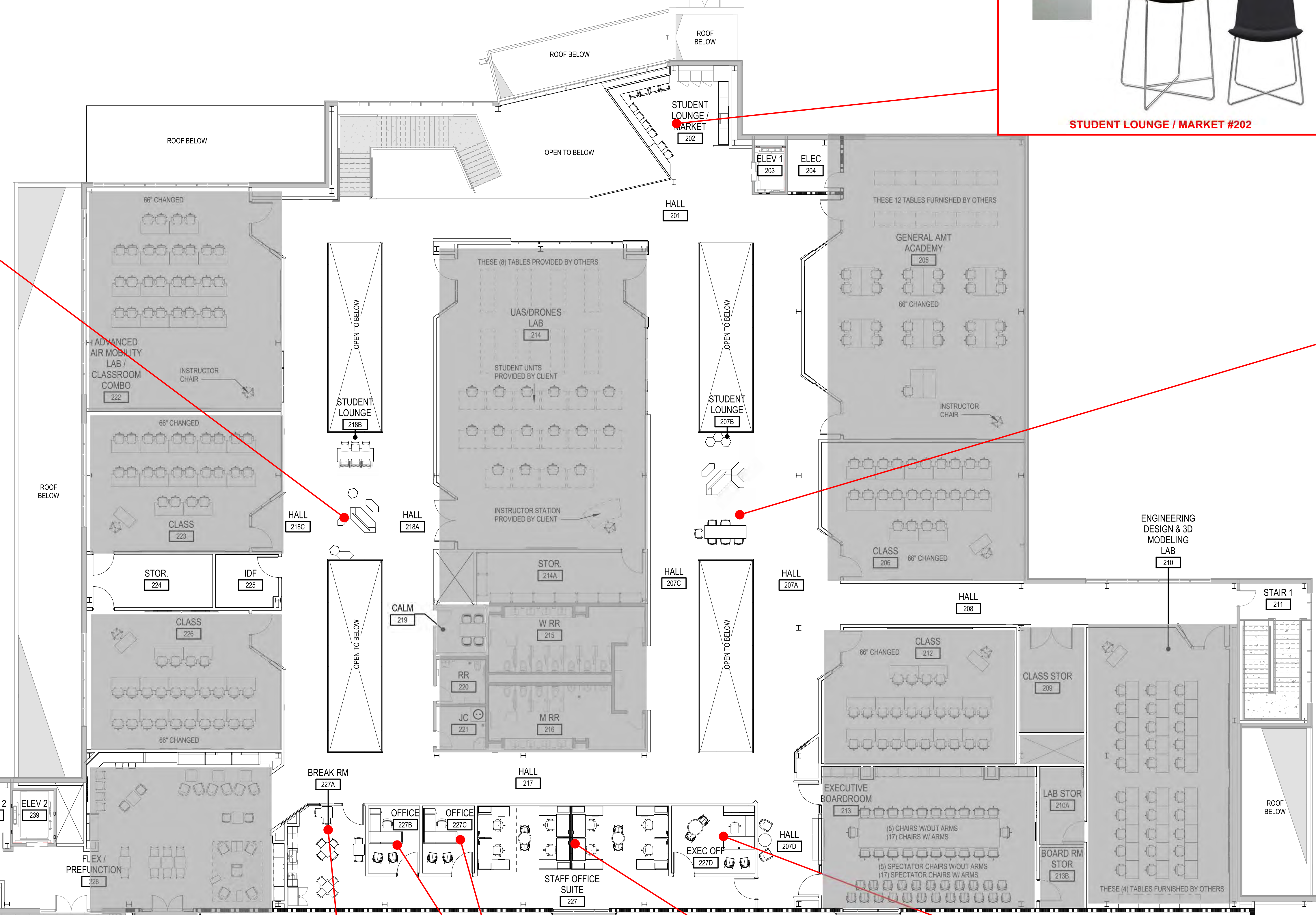
**CHAIR CH-05b:** SiOnIt Chair w/ metal X-Legs X-Base  
**UPHOLSTERY:** Archflex / Write-Off / Telfair / Goldenrod  
**BASE:** Chrome

**PARSONS TABLE TB-17b:** OFS / Krita  
Standard Height Table w/ Power Module, VGA  
Coupler / (1) Power Cord / (1) USB-A Module  
(1) HDMI Coupler  
**LAMINATE:** OFS Peak

**PRISM OTTOMAN CH-13c:**  
HIGHTOWER / Prism  
Honeycomb Ottoman  
**FABRIC:** Simson / performance  
vinyl / Savile / SVL22 / Flannel

**PRISM OTTOMAN CH-13b:**  
HIGHTOWER / Prism Single  
Bench  
**FABRIC:** Simson / performance  
vinyl / Savile / SVL22 / Flannel

**PRISM DOUBLE BENCH W/  
BACK CH-13:** HIGHTOWER /  
Prism Double Bench w/  
Back, Power, and retractable  
Cord  
**FABRIC:** Simson /  
Performance vinyl / Criss  
Cross 2.0 / CRS242 /  
Desert



**STUDENT LOUNGE #218B**

**STUDENT LOUNGE / MARKET #202**

**STUDENT LOUNGE #207B**

**LEGEND**

■ AREAS NOT ADDRESSED ON THIS SHEET

**BREAK ROOM**

**POLY BAR STOOL CH-18:** SiOnIt Axya bar stool with mesh back and poly seat & felt glides

**BAR HEIGHT TABLE TB-02:** SiOnIt Paragon table w/ X-Base

**STANDARD HEIGHT TABLE TB-24:** SiOnIt Paragon Table w/ O/PFA chair, Mesh back, poly seat, armless sled base, felt glides

**FINISHES:** TOP: Folkstone Grey  
**SEAT:** Black  
**LEGS:** Chrome

**FINISHES:** TOP: Folkstone Grey  
**SEAT:** Black Powder Coat

**TYPICAL PRIVATE OFFICE**

**L-SHAPED DESK CG-01:** OFS Stacks, height adjustable desk, Wall mounted storage components, tack board, Storage Wastebasket

**WOOD LOOK LAMINATE CG-01**  
**TACKBOARD:** Arbor / Status  
**TOP:** HPDL / OFS Peak  
**CHASSIS:** HPDL OFS Peak  
**TACKBOARD:** Arbor / Status  
**ACCENT DOORS:** Frosted Acrylic

**SIDE CHAIR CH-22b:** SiOnIt WIT chair, Mesh back / upholstered seat with arms & casters.

**BACK:** Mesh  
**FRAME:** Silver  
**SEAT:** Simson / Performance Fabric/Hexie / 65665 / Ochre

**TASK CHAIR CH-10:** Herman Miller Mirra 2 ergonomic task chair / standard hgt., TIL, Lumber, Ag, Poly arms, Mesh back, Triflex seat, Ref. spec sheets for pre-approved alternates

**BACK:** Triflex / Graphite  
**FRAME:** Graphite  
**SEAT:** Airweave / Graphite

**STAFF OPEN OFFICE #227**

**WORKSTATION WS-02:** OFS / Staks

**TOP:** OFS Peak  
**BASE:** Onyx

**TASK CHAIR CH-10:** Herman Miller Mirra 2 ergonomic task chair / standard hgt., TIL, Lumber, Ag, Poly arms, Mesh back, Triflex seat, Ref. spec sheets for pre-approved alternates

**BACK:** Triflex / Graphite  
**FRAME:** Graphite  
**SEAT:** Airweave / Graphite

**MEETING TABLE TB-01b:** OFS / Ninetree20 Table / 30" laminate top and edge / Low profile Disc Base

**TOP:** OFS Peak  
**BASE:** Onyx

**SIDE CHAIR CH-22a:** SiOnIt WIT chair, Mesh back / upholstered seat with arms, & casters.

**BACK:** Mesh  
**FRAME:** Silver  
**SEAT:** Archflex Write-Off / Propel / Gris / COM

**EXECUTIVE OFFICE #227D**

**EXEC. U-SHAPED DESK CG-02:** OFS Stacks  
**DESK:** OFS HPDL / Peak  
**TACKBOARD:** OFS Arbor / Crow  
**ACCENTS:** Frosted Acrylic

**TASK CHAIR CH-10:** Herman Miller Mirra 2 ergonomic task chair / standard hgt., TIL, Lumber, Ag, Poly arms, Mesh back, Triflex seat, Ref. spec sheets for pre-approved alternates

**BACK:** Triflex / Graphite  
**FRAME:** Graphite  
**SEAT:** Airweave / Graphite

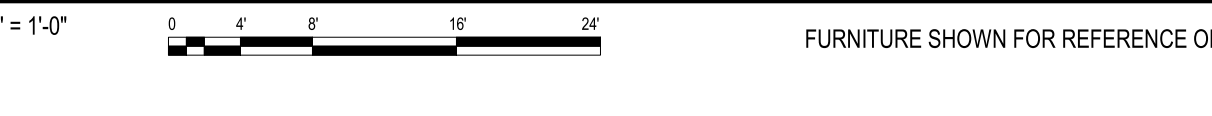
**SIDE CHAIR CH-22a:** SiOnIt WIT chair, Mesh back / upholstered seat with arms, & casters.

**BACK:** Mesh  
**FRAME:** Silver  
**SEAT:** Archflex Write-Off / Propel / Gris / COM

**EXECUTIVE CONF. TABLE TB-06:** OFS Ninetree20 Round w/ HPDL Top / knife edge

**TOP:** HPDL / Peak  
**BASE:** Luster Silver

**REFERENCE FURNITURE PLAN - SECOND FLOOR - STUDENT LOUNGES - PUBLIC AREAS, ADMIN, AND CUBICLES**



**NCAT EXPANSION - TENANT INFILL**  
WSU TECH  
4004 N Webb Road | Building 400 | Wichita, KS 67226

AS107	AS17	01/20/2026
AS103	AS13	09/08/2025
PROJECT NO:	DESCRIPTION	DATE
1303BR22020		
STATUS:	CERTIFIED FINAL	
DATE:	07/16/2025	
DRAWN BY:	MP / KB	
CHECKED BY:	JGP	

REFERENCE FURNITURE PLAN - SECOND FLOOR

**IF112-Ta**

SHEET 6502.007  
PLOT DATE: 4/1/2026 3:34:39 PM  
FILE PATH: \\mbadask.dcs\j1303BR22020\_Crossland\_WSU\Tech\Interior\Lab\_11\_F24.rvt

**FLEX PREFUNCTION #228**

**BAR HEIGHT STOOL CH-19:** SiOnIt Axis Bar height stool w/ metal X-Base

**UPHOLSTERY:** Upholstery: Architect Write-Off Vinyl / Taffar / Goldenrod  
**BASE:** Chrome

**PARALLON CAFE TABLE TB-25:** SiOnIt 30" high table

**PARALLON CAFE TABLE TB-25:** SiOnIt Bar height table  
**FINISHES:** TOP: GR2 Laminate / Grey  
**BASE:** Black

**AXIS GUEST CHAIR CH-05:** SiOnIt Axis guest chair, upholstered seat and back, X-Slid base

**FINISHES:** UPHOLSTERY: Architect / Write-Off / Taffar / Peach  
**LEGS:** Chrome

**CINQUE GUEST CHAIR CH-17:** OFS Guest Chair with curved wrap arms / Architect Write-Off Vinyl upholstery, X- metal Base w/ wood legs

**FINISHES:** UPHOLSTERY: Architect Write-Off Vinyl / Interlock / Cinder  
**X-BRACE:** Polished Chrome  
**LEGS:** Ebony Stain

**PARALLON COFFEE TABLE TB-26:** SiOnIt 20" high occasional table

**FINISHES:** TOP: GR2 Laminate / Grey  
**BASE:** Black

**X&O OCCASIONAL TABLES TB-09:** Carolina Rectangular 1/2 Table solid surface top, and plinth base, 19" high

**X&O OCCASIONAL TABLES TB-10:** Carolina Rectangular 1/2 Table solid surface top, and plinth base, 20" high

**X&O OCCASIONAL TABLE TB-11:** Carolina cube table with top power outlet, and solid surface top

**KASURA SLED BASE CHAIR CH-15:** OFS Kasura Low-Back Lounge Chair with vinyl wrap accent

**FINISHES:** UPHOLSTERY: Architect Write-Off Vinyl / Ryder / Banister  
**UPHOLSTERED ACCENT WRAP:** Architect Write-Off Vinyl / Taffar / Goldenrod  
**LEGS:** Polished Chrome

**FINISHES:** MPDL CHASSIS: Peach  
**PLINTH BASE:** Black  
**SOLID SURFACE TOP:** Milky Way

**EXECUTIVE BOARD ROOM #213**

**SiOnIt Wtl Side Chair with Arms CH-22c:** Mid back, Loop Arms, Mesh Back, Casters

**SiOnIt Wtl Side Chair Armless CH-22a:** Mesh Back, Casters

**FINISHES:** BACK: Mesh Back Black Seat: SiOnIt Grid Canvas  
**ARMS & FRAME:** Silver

**SiOnIt HIGH BACK CONFERENCE CHAIR CH-06:** (17) High back, Fixed Loop Arms, Full Handle DETAIL

**BACK:** SiOnIt Knit / Black  
**ARMS:** Silver Metallic  
**BASE:** Polished Aluminum

**SiOnIt HIGH BACK CONFERENCE CHAIR CH-06b:** (5) High back, Armless, Full Handle DETAIL

**BACK:** SiOnIt Knit / Black  
**BASE:** Polished Aluminum

**ENWORK EXPANSE EXECUTIVE CONFERENCE TABLE TB-08:** Back Painted Glass Top (324" x 60") large conference table with support beams and angled bases, cable management through frame and bases, removable horizontal bottom base covers.

**FINISHES:** CONFERENCE TABLE TOP: Back Painted Glass, White Knife Edge, Statement Birch Ply  
**BASE:** Silver Paint

Back-Painted Glass on Painted Knife-Edge MDF (Glass or Frosted, White, Black, or Light Beige)

Statement Birch Ply Knife Edge

**POWER MODULE OPTIONS:**

- ENWORK GHOST GROMMET
- ENWORK ELLORA GROMMET
- CUSTOMER'S OWN GROMMET; TABLE HOLES FACTORY CUT TO CUSTOMER'S SPECIFICATIONS

Enwork Ghost Grommet

Enwork Ellora Grommet

**MEZZANINE #229**

**POLY BAR STOOL CH-12:** K1 OPT4 bar stool with mesh back and poly seat, & felt glides

**SIDE CHAIR CH-11:** K1 OPT4 chair. Mesh back, poly seat, armless sled base, & felt glides

**FINISHES:** MESH BACK: Black  
**SEAT:** Black  
**LEGS:** Chrome

**BAR HEIGHT TABLE TB-35:** SiOnIt Paralon Bar Height Table: 30" x 30"; X-Base

**STANDARD HEIGHT TABLE TB-24:** SiOnIt Paralon Bar Height Table: 30" x 30"; X-Base

**STANDARD HEIGHT TABLE TB-27:** SiOnIt Paralon Bar Height Table: 30" x 30"; X-Base

**FINISHES:** TOP: Folkstone Grey  
**BASE:** Black Powder Coat

**HALL #207D**

**WYBE OCCASIONAL TABLE TB-21:** OFS 28" Dia. Veneer Top w/ wire "Bottle" base

**FINISHES:** TOP: Veneer / OFS Linen  
**BASE:** Mirrored "Bottle" Base

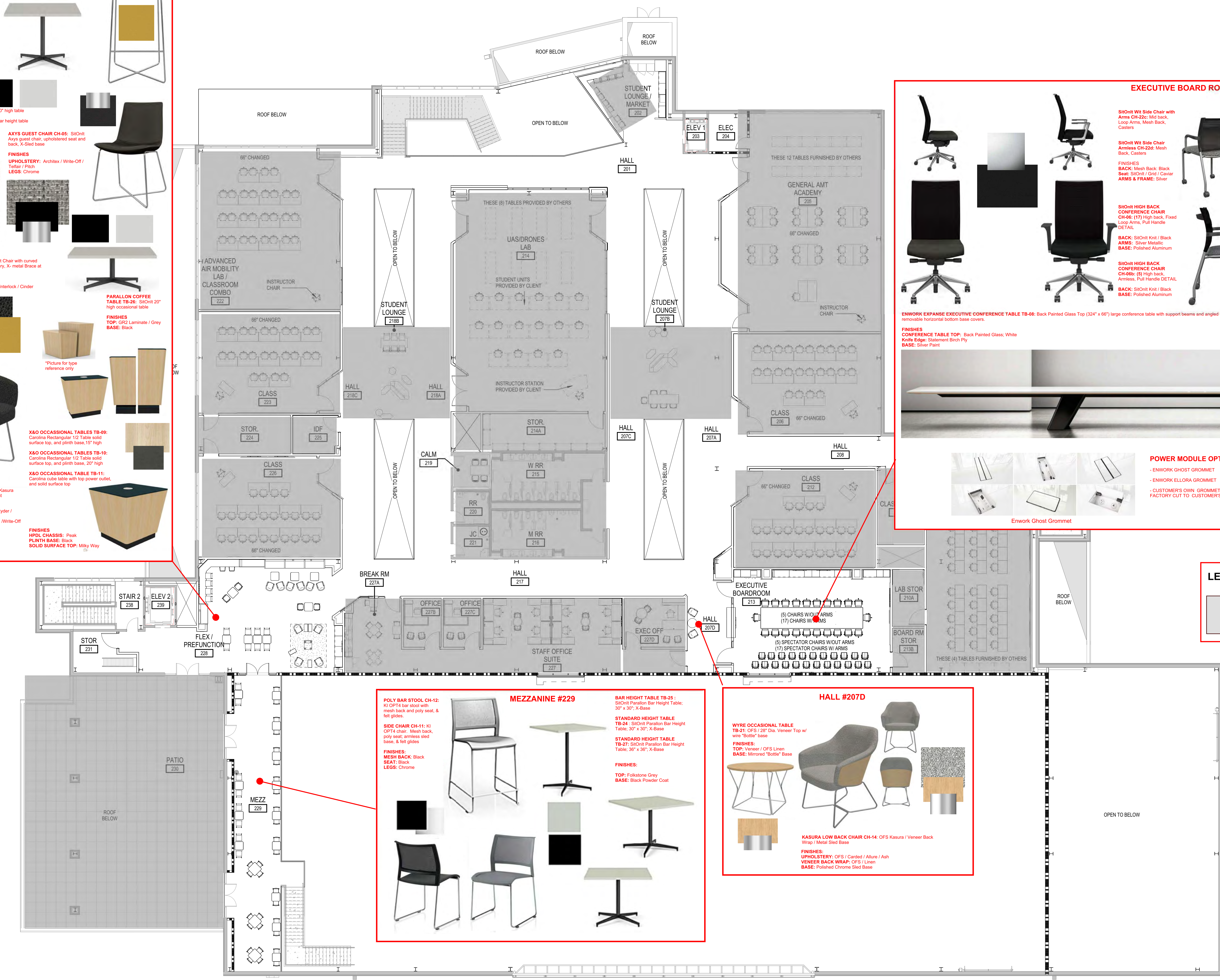
**KASURA LOW BACK CHAIR CH-14:** OFS Kasura / Veneer Back Wrap / Metal Sled Base

**FINISHES:** UPHOLSTERY: OFS / Carded / Allure / Ash  
**VENNER BACK WRAP:** OFS / Linen  
**BASE:** Polished Chrome Sled Base

**LEGEND**

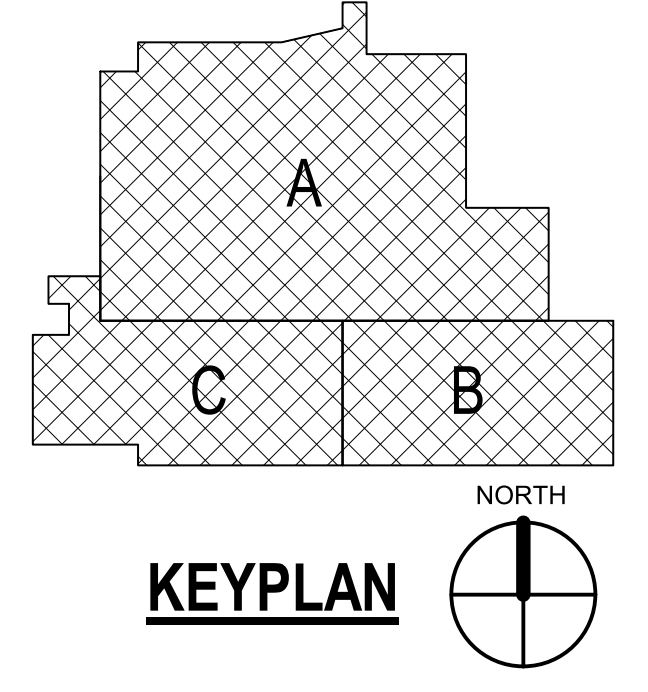
ASIA

AREAS NOT ADDRESSED ON THIS SHEET



SHEET 0507 087  
PLOT DATE: 4/1/2026 3:34:39 PM  
FILE PATH: \\mbadask.dcs\1\3038R22020\_Crossland\_WSU\Tech\hangar\lab\_TL\_F24.rvt

**REFERENCE FURNITURE PLAN - SECOND FLOOR - FLEX / PREFUNCTION - MEZZANINE - PATIO #230 - HALL #207D - BOARDROOM #217**



ASI07	ASI 7	01/20/2026
ASI03	ASI 3	09/08/2025
DESCRIPTION		DATE
PROJECT NO:		13038R22020
STATUS:		CERTIFIED FINAL
DATE:		07/16/2025
DRAWN BY:		MP / KB
CHECKED BY:		JGP

REFERENCE FURNITURE PLAN - SECOND FLOOR

**IF112-Tb**

**NCAT EXPANSION - TENANT IN**  
**WSU TECH**  
4004 N Webb Road | Wichita, KS 67226

**TEACHER'S CHAIR CH-01:** SitOnIt / High Back task chair with adjustable lumbar, standard synchro tilt, High Cylinder

**FINISHES:**  
UPHOLSTERY: Black Mesh Back  
SEAT: SitOnIt / Dice / Onyx (Carded Grade 2)  
BASE: Brushed Aluminum

**STUDENT LIGHT TASK CHAIR CH-02:** SitOnIt / Wit Light Task Chair, mid-back with mesh back, adj. lumbar, pull handle, synchroswivel tilt, height adj. arms, black base and waterfall seat

**FINISHES:**  
BACK: Black Mesh Back  
SEAT: C.O.M. - Archbox Write-Off / Mantle - 2417 Performance Vinyl / Magnesium  
BASE: BLACK

**CLASSROOM GLASSBOARDS W/HTBD:** Clarus / Float Mount Magnetic Glassboard; (Include Accessories)

**FINISHES:**  
GLASS: TBD From full collection of Clarus Colors

\*Each Glassboard to include (2) 8" boards; Mounting hardware; Accessories for marker and eraser storage

**CLASSROOM W/LITE TASK CHAIRS, NO INSTRUCTOR DESK**

**TEACHER'S CHAIR CH-01:** SitOnIt / High Back task chair with adjustable lumbar, standard synchro tilt, High Cylinder

**FINISHES:**  
UPHOLSTERY: Black Mesh Back  
SEAT: SitOnIt / Dice / Onyx (Carded Grade 2)  
BASE: Brushed Aluminum

**STUDENT LIGHT TASK CHAIR CH-02:** SitOnIt / Wit Light Task Chair, mid-back with mesh back, adj. lumbar, pull handle, synchroswivel tilt, height adj. arms, black base and waterfall seat

**FINISHES:**  
BACK: Black Mesh Back  
SEAT: C.O.M. - Archbox Write-Off / Mantle - 2417 Performance Vinyl / Magnesium  
BASE: BLACK

**CLASSROOM GLASSBOARDS W/HTBD:** Clarus / Float Mount Magnetic Glassboard; (Include Accessories)

**FINISHES:**  
GLASS: TBD From full collection of Clarus Colors

\*Each Glassboard to include (2) 8" boards; Mounting hardware; Accessories for marker and eraser storage

**UAS DRONES LAB #214**

**TEACHER'S STATION DSK-01:** OFS / Applause 24" x 48" Height adjustable table, electric, Tube Base with Casters

**TEACHER'S CHAIR CH-01:** SitOnIt / High Back task chair with adjustable lumbar, standard synchro tilt, High Cylinder

**LAMINATE:** Gray HPDL  
**BASE:** Black

**FINISHES:**  
UPHOLSTERY: Black Mesh Back  
SEAT: SitOnIt / Dice / Onyx (Carded Grade 2)  
BASE: Brushed Aluminum

**STUDENT LIGHT TASK CHAIR CH-02:** SitOnIt / Wit Light Task Chair, mid-back with mesh back, adj. lumbar, pull handle, synchroswivel tilt, height adj. arms, black base and waterfall seat

**FINISHES:**  
BACK: Black Mesh Back  
SEAT: C.O.M. - Archbox Write-Off / Mantle - 2417 Performance Vinyl / Magnesium  
BASE: BLACK

**CLASSROOM GLASSBOARDS W/HTBD:** Clarus / Float Mount Magnetic Glassboard; (Include Accessories)

**FINISHES:**  
GLASS: TBD From full collection of Clarus Colors

\*Each Glassboard to include (2) 8" boards; Mounting hardware; Accessories for marker and eraser storage

**CLASSROOMS WITH LITE TASK CHAIRS**

**TEACHER'S STATION DSK-01:** OFS / Applause 24" x 48" Height adjustable table, electric, Tube Base with Casters

**TEACHER'S CHAIR CH-01:** SitOnIt / High Back task chair with adjustable lumbar, standard synchro tilt, High Cylinder

**LAMINATE:** Gray HPDL  
**BASE:** Black

**FINISHES:**  
UPHOLSTERY: Black Mesh Back  
SEAT: SitOnIt / Dice / Onyx (Carded Grade 2)  
BASE: Brushed Aluminum

**STUDENT LIGHT TASK CHAIR CH-02:** SitOnIt / Wit Light Task Chair, mid-back with mesh back, adj. lumbar, pull handle, synchroswivel tilt, height adj. arms, black base and waterfall seat

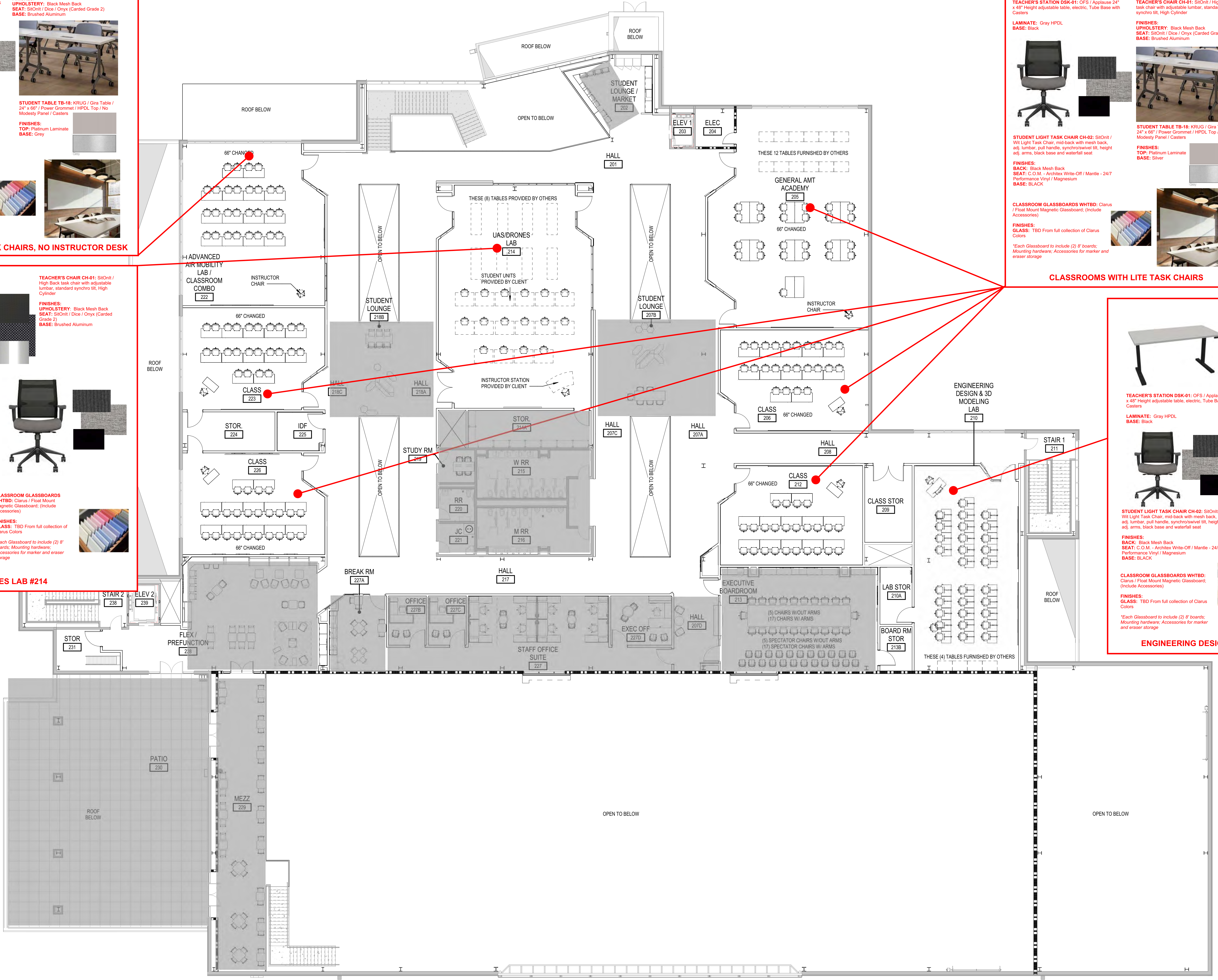
**FINISHES:**  
BACK: Black Mesh Back  
SEAT: C.O.M. - Archbox Write-Off / Mantle - 2417 Performance Vinyl / Magnesium  
BASE: BLACK

**CLASSROOM GLASSBOARDS W/HTBD:** Clarus / Float Mount Magnetic Glassboard; (Include Accessories)

**FINISHES:**  
GLASS: TBD From full collection of Clarus Colors

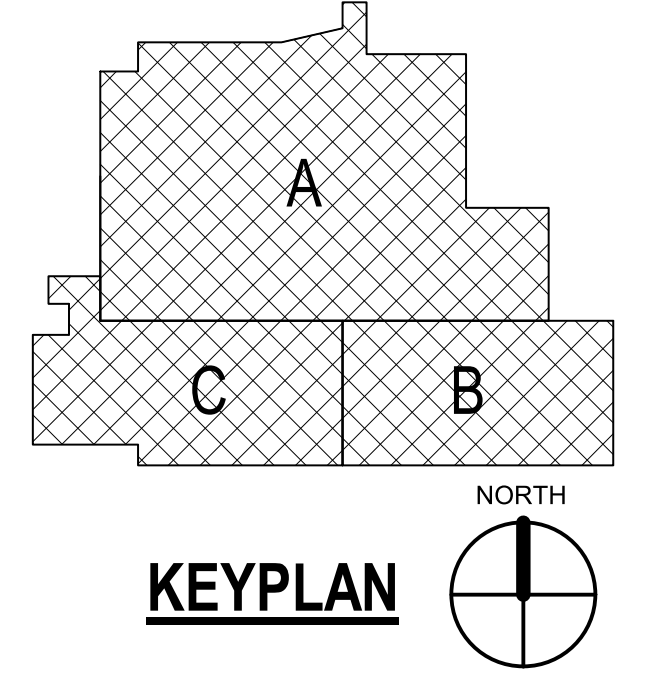
\*Each Glassboard to include (2) 8" boards; Mounting hardware; Accessories for marker and eraser storage

**ENGINEERING DESIGN & 3D MODELING LAB #210**



**LEGEND**

AREAS NOT ADDRESSED ON THIS SHEET



**NCAT EXPANSION - TENANT INFILL**

**WSU TECH**  
4004 N Webb Road | Building 400 | Wichita, KS 67226

ASI07	ASI 7	01/20/2026
ASI03	ASI 3	09/08/2025
DESCRIPTION		DATE
PROJECT NO:	13038R22020	
STATUS:	CERTIFIED FINAL	
DATE:	07/16/2025	
DRAWN BY:	MP / KB	
CHECKED BY:	JGP	

REFERENCE FURNITURE PLAN - SECOND FLOOR

**IF112-Tc**